

EXPLODED VIEW

**GRINDER DOSER
MAJOR**

ESMJDOS04.03 09/2009

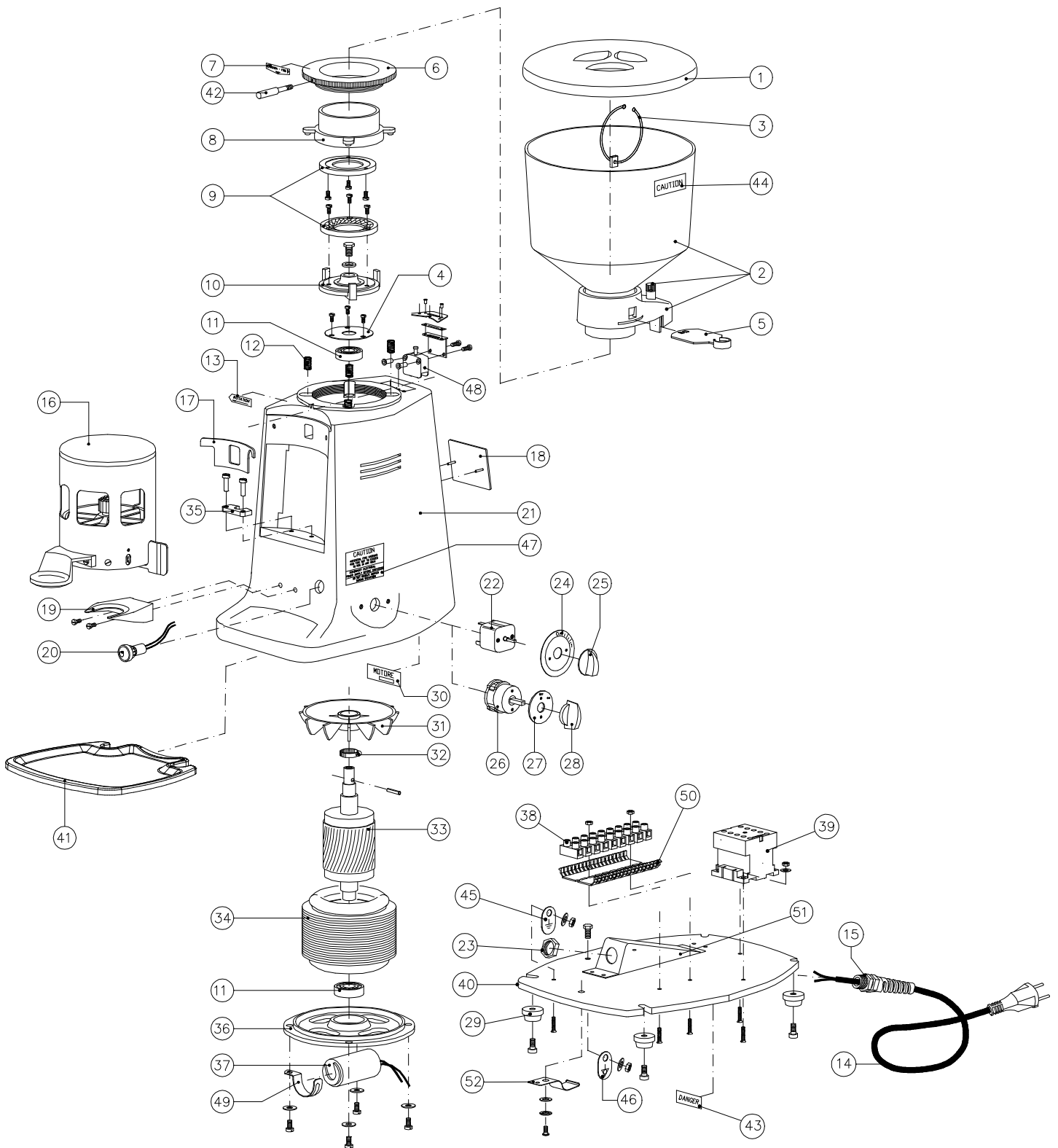


MAZZER LUIGI s.r.l
VIA MOGLIANESE, 113
30030 GARDIGIANO DI SCORZE' (VE)
ITALIA
TEL. +39 041 5830200 r.a. - FAX +39 041 5830060
E-mail: mazzер@mazzер.com - <http://www.mazzер.com>

N.	DESCRIPTION	CODE	Q.	NOTES
1	Hopper cover	S000COD01	1	
2	Major/Robur complete Hopper set	S00SCAE03	1	(hopper + adapter + pin)
3	Magnet with ring	S00SCAC01	-	Optional
4	Major cover bearing	SMJ0COA02	1	
5	Hopper locking slide	S000SEB02	1	
6	Coffee grinding adjustment disk	SMJ0GHA04	1	
7	Label: Coarse - fine / Adjustment initial position	S000ETA03	1	
8	Upper grinding blade holder Major/Royal/Stark	SRL0POA06	1	
9a	Grinding blade set (rif. 151-A)	FMA00151A	1	Single phase versions
9b	Grinding blade set (rif. 151-B)	FMA00151B	1	Three phase versions
10	Lower grinding blade holde Major/Royal	SMJ0POA07	1	
11	Bearing 6204 DDU CM	S000CUA04	2	
12	Grinding adjustment spring	SSJ0MOB01	4	
13	Label: Motor rotation	S000ETA00	1	
14a	Electric cable - "Italy" single phase	S000CAD01	1	
14b	Electric cable - three phase 220-230V	S000CAD09	1	
14c	Electric cable - three phase 380-400V	S000CAD03	1	
14d	Electric cable - "Europe"	S000CAD04	1	
14e	Electric cable - "USA"	S000CAD05	1	
14f	Electric cable - "Australia"	S000CAD07	1	
14g	Electric cable - "Great Britain"	S000CAD08	1	
14h	Electric cable - "Israel"	S000CAD10	1	
14i	Electric cable - "Svizzera"	S000CAD06	1	
14l	Electric cable - "China"	S000CAD16	1	
14m	Electric cable - "Argentina"	S000CAD18	1	
14n	Electric cable - "Korea"	S000CAD19	1	
15	Cable locking flexible PG11 black	S000PAB04	1	
16a	Manual doser/timer Europe	SMJSGRA03	1	Manuale-timer versions
16b	Automatic doser Europe	SMJSGRL05	1	Automatic versions
16c	Manual doser/timer USA	SMJSGRE03	1	Manual-timer versions
16d	Automatic doser USA	SMJSGRE05	1	Automatic versions
17	Gasket	S000GUA01	1	
18	"MAZZER 4M" plate	S000TAA02	1	
19	Fork for filterholder rest	S000FOB02	1	
20a	Pilot light 230/400V, green	S000LAA06	1	220-240V/50Hz single phase vers. 230-400V/50Hz three phase vers. 200V/50-60Hz three phase vers.
20b	Pilot light 110V UL, red	S000LAA07	1	110V/60Hz vers. 100V/50-60Hz vers.
21	Body	SMJ0CAA04	1	
22a	Two pole time switch	S000TIA02	1	Single phase timer vers
22b	Three pole time switch	S000TIA03	1	Three phase timer vers.
23	Nut for cable locking PG11	S000DAA02	1	
24	Time switch plate	S000TAA03	1	Timer vers.
25	Time switch knob	S000MAB01	1	Timer vers.
26a	Three pole rotative switch	S000INA04	1	Manual three phase vers
26b	Two pole rotative switch with auxiliary phase	S000INA13	1	Automatic single phase vers.
26c	Three pole rotative switch with auxiliary phase	S000INA10	1	Automatic three phase vers.
26d	Two pole rotative switch	S000INA09	1	Manual single phase vers.
27a	Switch plate O / I	-	1	Manual vers.
27b	Switch plate O / I / START	-	1	Automatic vers.
28	Rotative switch knob	-	1	
29	Support legs	S00SPIA01	4	
30a	Motor label MJ 220-240V/50Hz	SMJ0ETA01	1	
30b	Motor label MJ 230-400V/50Hz	SMJ0ETA03	1	
31	Cooling fan	SMJ0VEA01	1	
32	Fan fixing clamp	S000FAA01	1	
33	Rotor	SMJ0ROA02	1	
34a	Coiled stator single phase 220-240V/50Hz	SMJSPA01	1	Single phase 220-240V/50Hz vers.
34b	Coiled stator three phase 230-400V/50Hz	SMJSPA03	1	Three phase 230-400V/50Hz vers.
34c	Coiled stator single phase 110V/60Hz	SMJSPA08	1	Single phase 110V/60Hz vers.
34d	Coiled stator single phase 220V/60Hz	SMJSPAS01	1	Single phase 220V/60Hz vers.
34f	Coiled stator single phase 100V/50-60Hz	SMJSPA00	1	Single phase 100V/50-60Hz vers.
35	Doser fixing block	S000PIA10	1	110V/60Hz vers.
36	Motor cap	SMJ0CAB03	1	
37a	Capacitor 16 uF	S000COE03	1	Single phase 240V/50Hz vers. Single phase 230-240V/50Hz vers. Single phase 220V/60Hz vers. Single phase 220-230V/50Hz vers.
37b	Capacitor 60 uF UL	S000COE09	1	Single phase 110V/60Hz vers. Single phase 100V/50-60Hz vers.

N.	DESCRIPTION	CODE	Q.	NOTES
38	Terminal blocks	S000MOA04	1	12 poles
39a	Contactore MC9.10 – 230V/50Hz (*)	S000COC02	1	Single phase 220-230V/50Hz Three phase 230V/50Hz
39b	Contactore MC9.10 – 380V/50Hz (*)	S000COC08	1	380-400V/50Hz vers.
39c	Contactore BF16.10 – 110V/60Hz	S000COC10	1	110V/60Hz vers.
39d	Contactore BG9.10 – 220V/60Hz	S000COC28	1	220V/60Hz vers.
39e	Contactore BF16.10 – 100V/50-60Hz	S000COC15	1	100V/50-60Hz vers.
39f	Contactore BG9.10 – 230V/50Hz	S000COC18	1	Single phase 220-230V/50Hz Three phase 230V/50Hz
39g	Contactore 3RT1016 – 240V/50Hz	S000COC26	1	240V/50Hz vers.
39h	Contactore 3RT1016 – 400V/50Hz	S000COC27	1	380-400V/50Hz vers.
40a	Bottom plate Europe	SMJ0PIN01	1	
40b	Bottom palte USA	SMJ0PIN11	1	
41	Drip tray SJ-MJ-KO	SSJ0PIB02	1	
42	Grinding adjustment disk handle	SSJSPEA04	1	
43	Etichetta "Danger"	S000ETA14	1	100V/50-60Hz vers. 110/60Hz vers. 220V/60Hz vers.
44	Label "Caution - Hopper"	S000ETA15	1	110V/60Hz vers.
45	"Ground" plate	S000TAA18	1	
46	"External unipotential clamp" plate	S000TAA19	1	CE vers.
47	"Caution" plate	S000TAA20	1	110V/60Hz vers.
48	Hopper security switch	S000INR01	1	
49	Capacitor locking clamp D.40	S000GRB05	1	
50	Under terminal board	S000SOT02	1	
51	Cable locking support	S000SUA01	1	
52	Sheet for Drip Tray locking	SMI0LAM01	1	

(*) = Spare parts for appliances bought before 01st/07/2006 only



N.	DESCRIPTION	CODE	Q.	NOTES
1	Doser cover	S000COD02	1	
2	Cylinder for doser	S000CIA03	1	
3	Dose adjustment knob	S000MAB02	1	
4	Upper dosing star	SMJSSTA04	1	
5	Coffee outlet covering section plate	S000SEA01	1	
6	Female dosing star	S000STA03	1	
7	Dosing system pressing spring	S000MOB05	1	
8	Male dosing star	S000STA02	1	
9	Upper microswitch	S00SMIA07	1	
10	Doser pipe	SMJOTUA04	1	
11a	Coffee pressing device D.53	S000PRA02	1	
11b	Coffee pressing device D.54,5	S000PRA02	1	
11c	Coffee pressing device D.57,5	S000PRA02	1	
12	Corrugated ring D.32	S000ANA01	1	
13	Ratchet	S000CRA02	1	
14	Doser adjustment screw - M8x70	S000VIA01	1	
15	Lower microswitch spring	S000MOB06	1	
16	Lower microswitch star	S000STA05	1	
17	Lower microswitch	S00SMIA04	1	
18	Counter	S00SCOB02	1	
19	Dosing lever return spring	S000MOB03	1	
20	Nose	S000NAA01	1	
21	Doser bottom	S000FOA03	1	
22	Nose spring	S000MOB04	1	
23	Dosing lever	S00SLEA02	1	
24	Doser bottom set	S00SFOA01	1	
25	Coffee outlet guard	S000PRB02	1	
26	Bush coffee outlet guard	S000VIA04	2	ETL vers.
27	Doser washer D.50 thick. 0,4	S000ROA02	1	
28	Lower microswitch star space	S000DIA01	1	
29	Label "Danger"	S000ETA14	1	100V/50-60Hz vers. 110/60Hz vers. 220V/60Hz vers.
30	Oversized female dosing star	S000STA06	1	
31	Oversized dose adjustment knob	S000MAB03	1	
32	Oversized star with dosing knob	S00SGRA08	1	

